



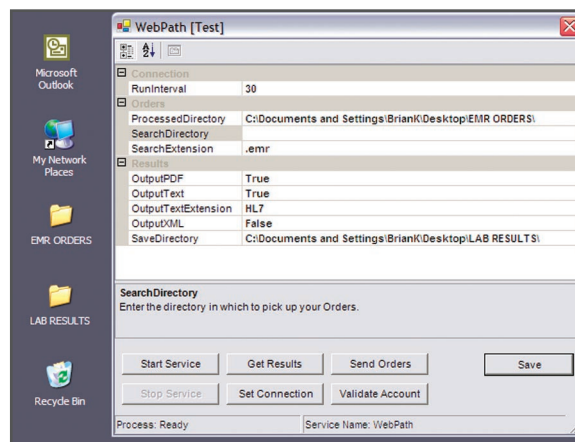
EMR Internet Interface™

Psyche Systems has developed a new way to connect all of your physician office EMR and Practice Management systems to your lab, without the cost and complexity of traditional interfacing methods. This dynamic Internet-based process exchanges demographic, billing, order, and result data from your clients' EMR systems with your Hospital or Laboratory Information System. Psyche's intelligent patient matching capabilities can dramatically reduce or eliminate the need for manual or duplicate data entry for you and your clients. This improves accuracy and turnaround time, and reduces errors. Information is exchanged using standard industry file formats including HL7, XML and PDF.

All of this through secure, web access – at less than half the cost of other industry EMR interfaces.

EMR Internet Interface Features Include:

- » Streamline data sharing between your LIS and EMR Systems
- » A powerful tool to support quick diagnosis and treatment
- » Easy, rapid integration to your customer's EMR – at HALF the cost
- » Automated processing
- » Properly manage pay-for-performance programs
- » Client Software – search for orders in a specified directory
- » Saves results in a specified directory



Efficiency and Accuracy

According to JCAHO, the laboratory generates as much as 80 percent of the information that physicians rely on for medical decisions, and test results account for some 80-90 percent of data in a patient record. As EMR adoption rises, integrating laboratory data directly into both the hospital's and physician office's EMR systems has significant advantages in improving patient care, and also in creating efficiencies and reducing clerical errors to help labs improve reimbursement rates.

Contact Us

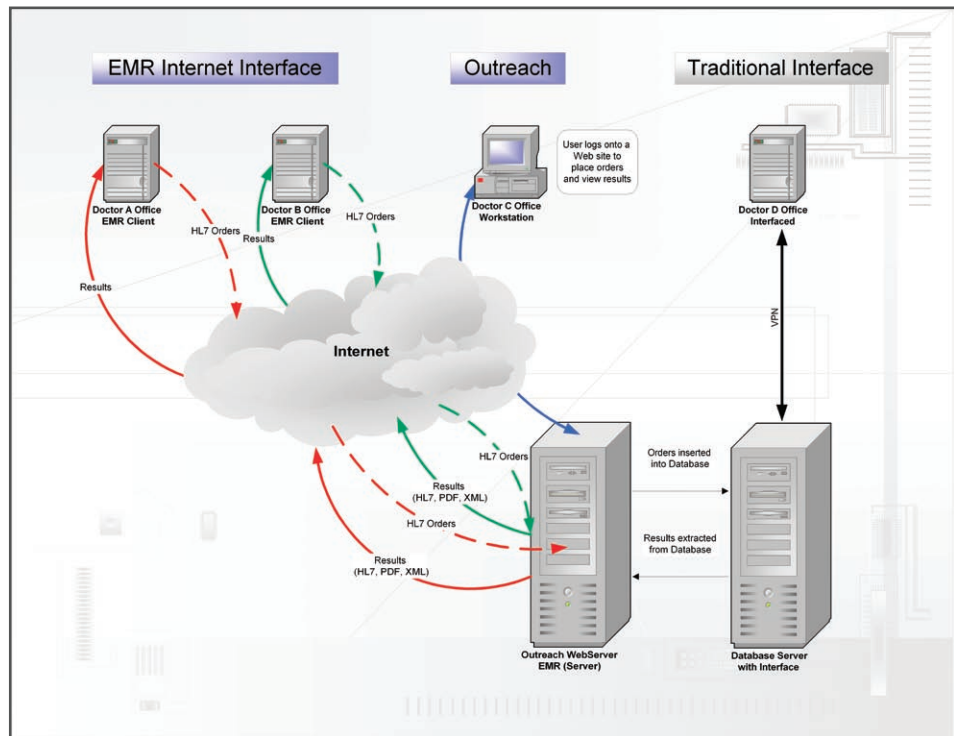
Psyche Systems Corporation
321 Fortune Boulevard
Milford, MA 01757
800-345-1514

www.psychesystems.com

 **PSYCHE**
Medical Laboratory Software
You Think, Therefore We Are



~
Don't just keep up
with innovation -
stay on top of it.
~



About Us

Psyche Systems Corporation is a private, profit-driven software company that has focused exclusively on delivering laboratory information systems to hospitals and clinics since 1976. It is this unwavering focus on serving its core customer base that has enabled Psyche to maintain strong customer loyalty and deliver on its commitment to high quality products and services. Psyche Systems' laboratory information systems are best-of-breed products designed to meet the specific needs of clinical and anatomic pathology laboratories. Psyche Systems works closely with its customer base during product development to ensure it's delivering the highest quality products and services at a competitive price.

Psyche's Products

- » **LabWeb** – a full-featured laboratory information system (LIS), including advanced functionality; rules-based analysis, a lean powerful database for indepth analysis, and quality assurance and quality control capabilities.
- » **SBB** – Psyche Systems Corporation's 510(k) approved Systematic Blood Bank (SBB) package exceeds the FDA guidelines regarding computerization of blood banks and transfusion services to deliver advanced features for improved efficiency, security and reporting.
- » **e.lixa** – Suite of hosted applications which extends and enhances existing laboratory information systems so that you can seamlessly add advanced functionality to maximize current IS investments.
- » **WindoPath** – WindoPath is a highly advanced, full-featured anatomic pathology information system with a modular, customizable design.